

# sand

TOM GUDER

$\text{♩} = 60$

Measures 1-3 of the piece. The key signature has one sharp (F#). The time signature is 4/4. The tempo is marked as quarter note = 60. The melody in the right hand consists of eighth-note patterns. The left hand provides a harmonic accompaniment with chords and moving lines. A triplet of eighth notes is marked in measure 2.

4

Measures 4-6. The melody continues with eighth-note patterns. The left hand features a steady eighth-note accompaniment. Measure 5 contains a whole rest in the right hand.

7

Measures 7-9. The melody continues. The left hand accompaniment changes in measure 8. Measure 9 features a triplet of eighth notes in the right hand and a whole rest in the left hand.

10

Measures 10-13. The melody continues. The left hand accompaniment changes in measure 10. Measure 13 ends with a whole rest in the right hand and a half note in the left hand.

14

Measures 14-16. The melody continues. The left hand accompaniment changes in measure 14. Measure 16 ends with a whole rest in the right hand and a half note in the left hand.

17

20

23

26

29

31

33



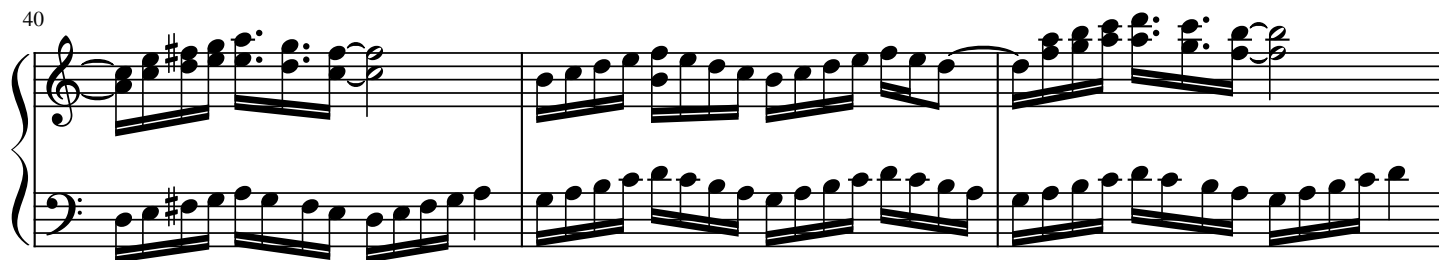
35



37



40



43



46



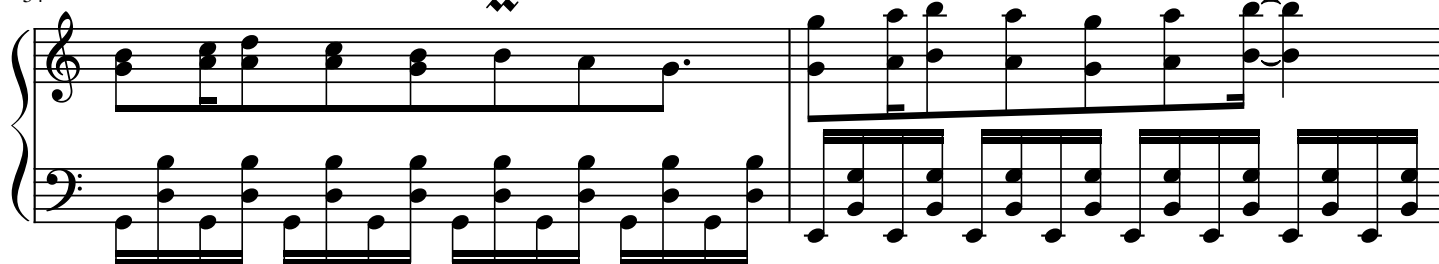
49



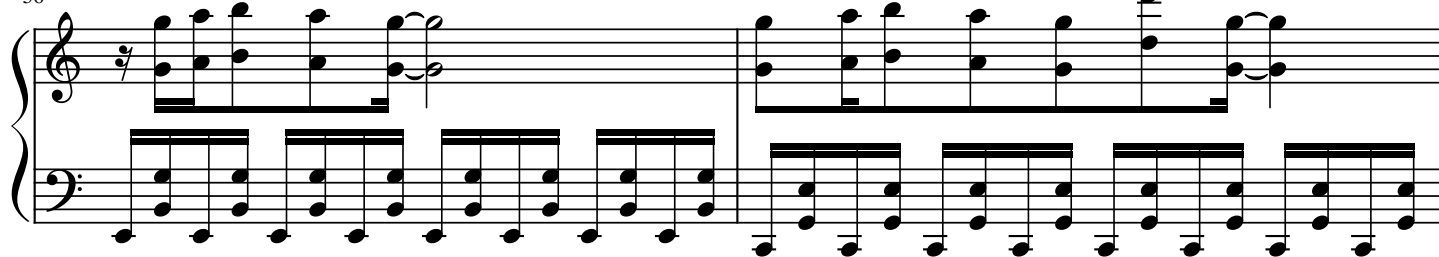
52



54



56



58

