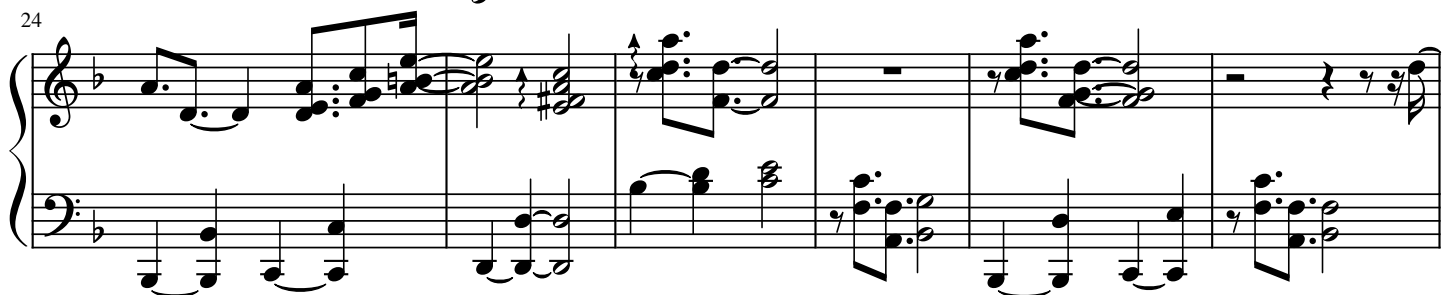
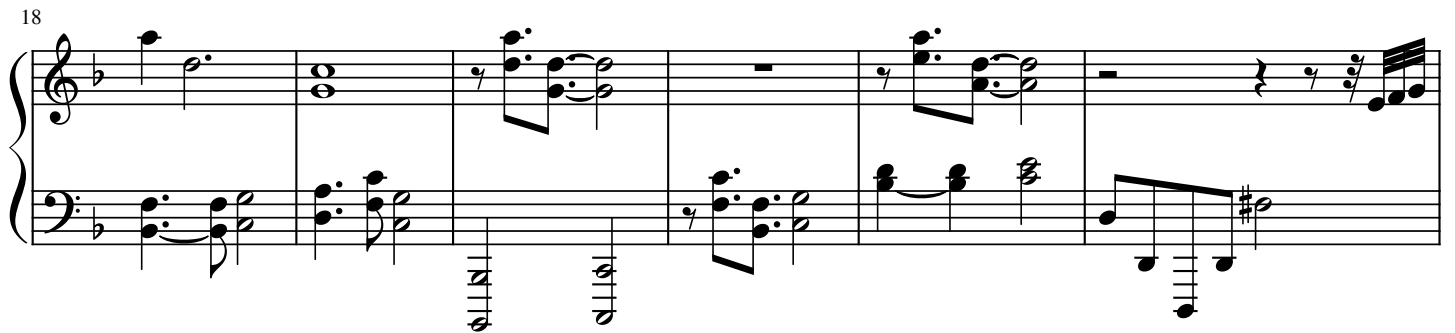
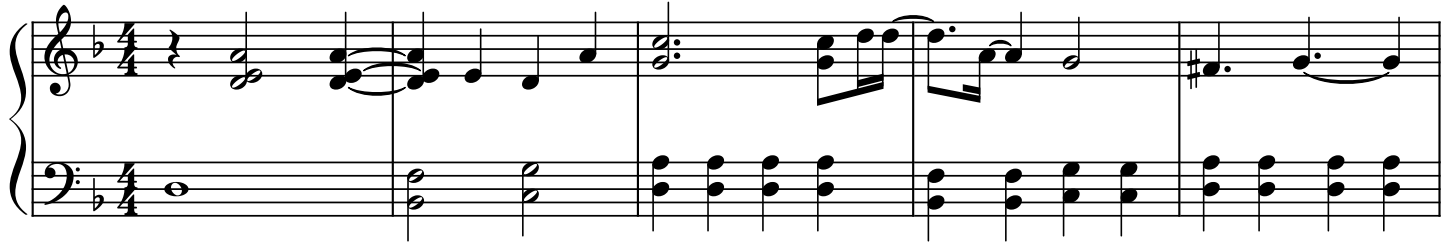


salz

TOM GUDER

♩ = 60



30

Measures 30-32. Treble clef: Complex melodic line with many beamed sixteenth notes. Bass clef: Accompaniment with eighth and quarter notes.

33

Measures 33-35. Treble clef: Series of beamed sixteenth notes in the first measure, then rests. Bass clef: Continues the accompaniment.

36

Measures 36-38. Treble clef: Rests. Bass clef: Continuous eighth-note accompaniment.

39

Measures 39-41. Treble clef: Rests. Bass clef: Continuous eighth-note accompaniment.

42

Measures 42-43. Treble clef: Continuous eighth-note accompaniment. Bass clef: Continuous eighth-note accompaniment.

44

Measures 44-46. Treble clef: Continuous eighth-note accompaniment with triplets. Bass clef: Continuous eighth-note accompaniment.

46

System 46-48: Treble clef contains a continuous sixteenth-note arpeggiated pattern. Bass clef contains a simple eighth-note accompaniment. Measure 48 features a key signature change to one sharp (F#).

49

System 49-50: Treble clef contains a continuous sixteenth-note arpeggiated pattern. Bass clef contains a simple eighth-note accompaniment.

51

System 51-53: Treble clef contains a continuous sixteenth-note arpeggiated pattern. Bass clef contains a simple eighth-note accompaniment. Measure 53 ends with a double bar line.

54

System 54-58: Treble clef contains a melodic line with eighth and sixteenth notes. Bass clef contains a simple eighth-note accompaniment. Measure 58 ends with a double bar line.

59

System 59-62: Treble clef contains a melodic line with eighth and sixteenth notes. Bass clef contains a simple eighth-note accompaniment. Measure 62 ends with a double bar line.

63

System 63-65: Treble clef contains a melodic line with eighth and sixteenth notes. Bass clef contains a simple eighth-note accompaniment. Measure 65 ends with a double bar line.