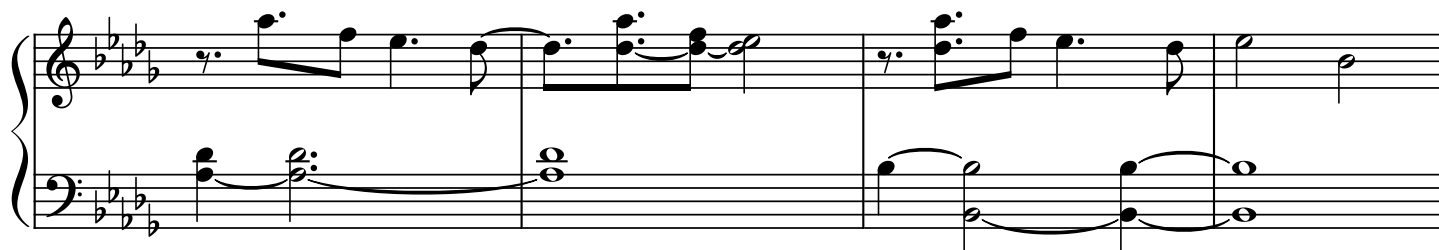
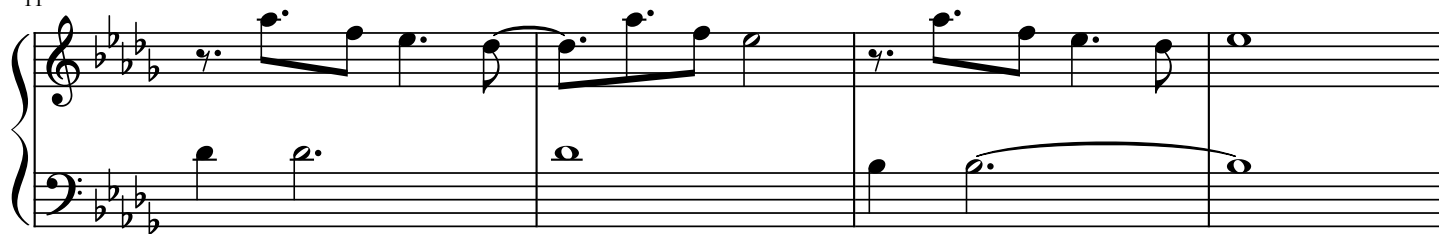


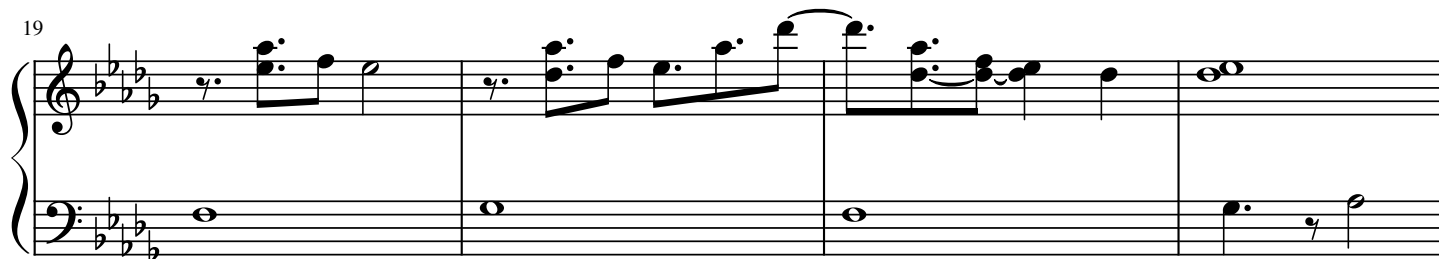
TOM GUDER

The image displays a musical score for 'The Swan' by Camille Saint-Saëns. It is a piano introduction and vocal melody. The score is written for a piano (left hand) and a vocal line (right hand). The key signature is B-flat major (two flats), and the time signature is 4/4. The tempo is marked 'J = 80' (quarter note = 80 beats per minute). The score is divided into four systems, each with a measure number (1, 3, 5, 7, 9) at the beginning of the vocal line. The piano introduction consists of a series of descending eighth notes in the right hand, while the left hand plays a simple harmonic accompaniment. The vocal melody is a simple, descending line of eighth notes. The score is presented in a clean, black and white format, suitable for a music book or a digital score display.

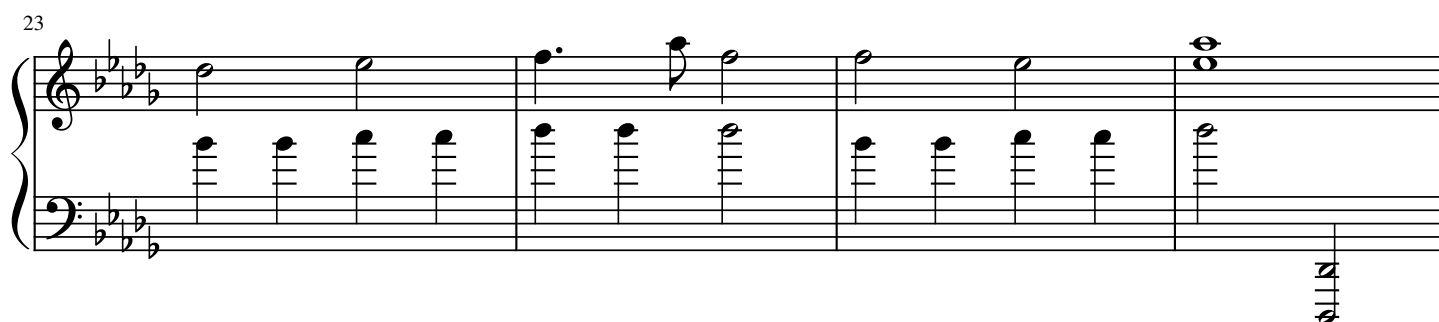
11



15



19



23

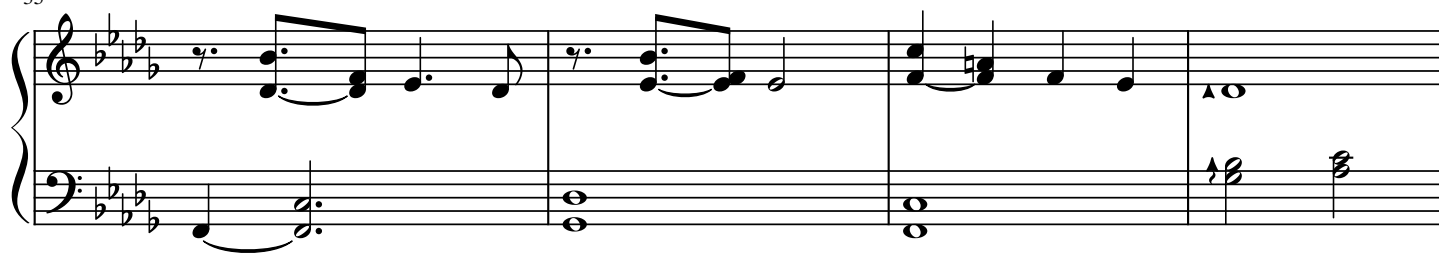


27

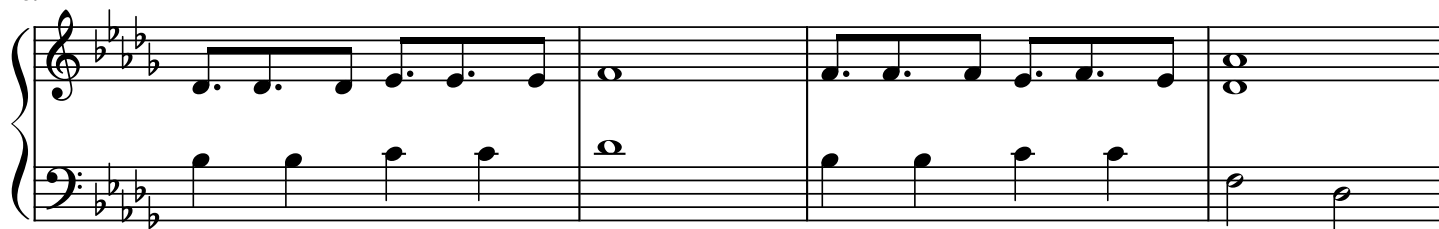


31

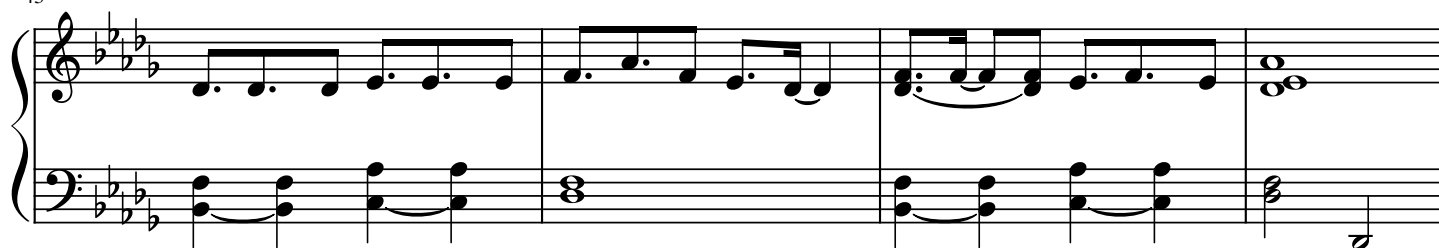
35



39



43



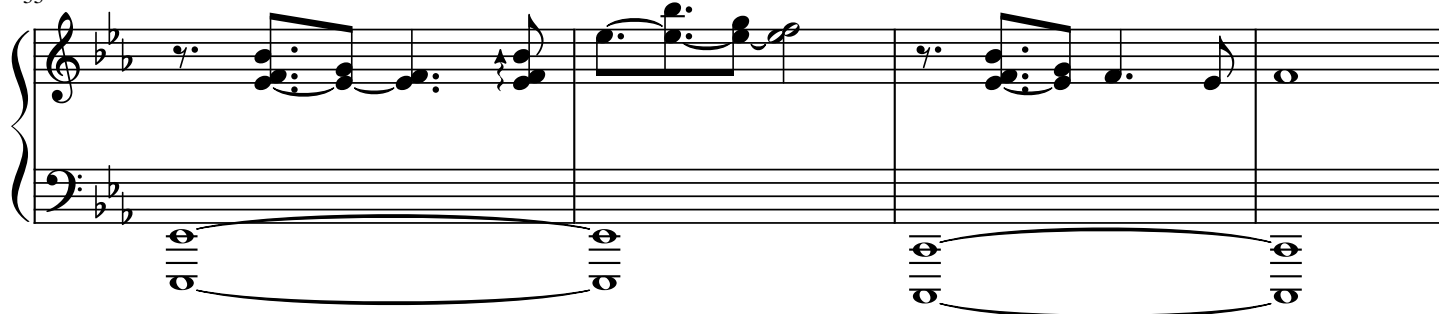
47



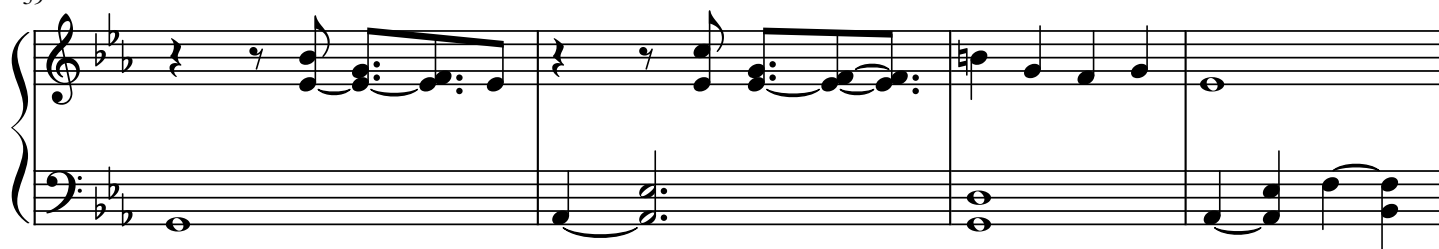
51



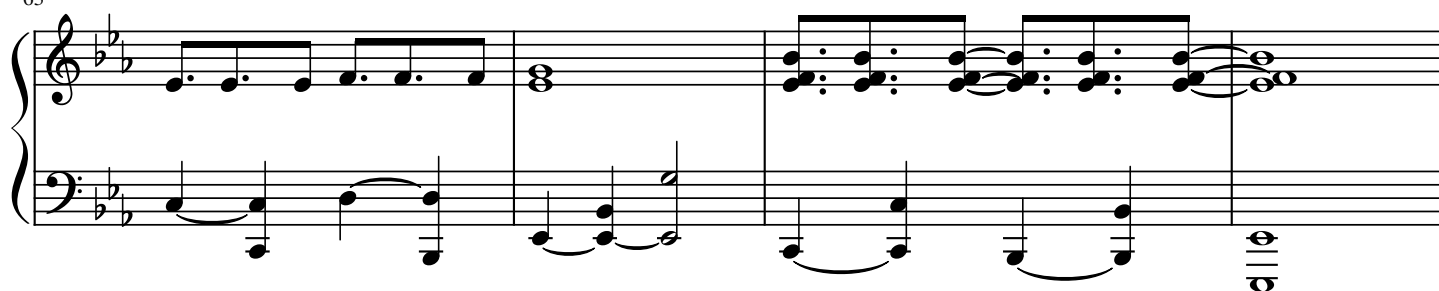
55



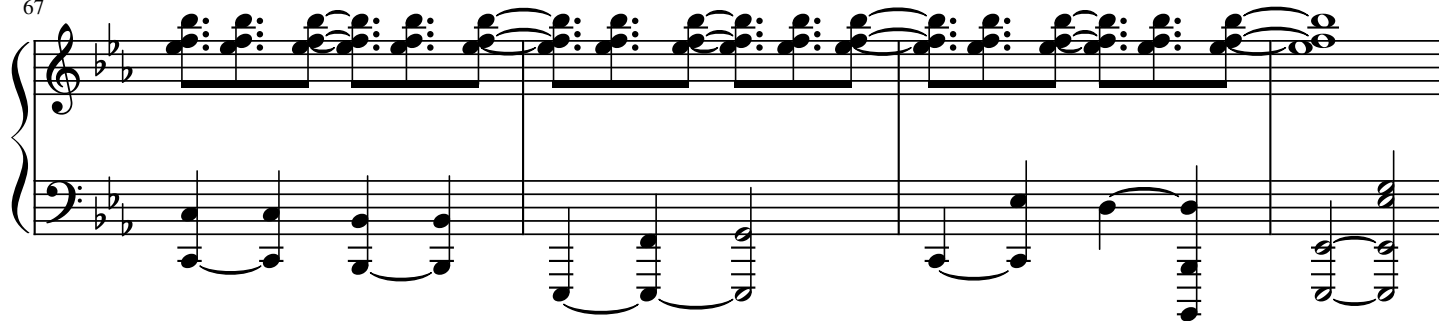
59



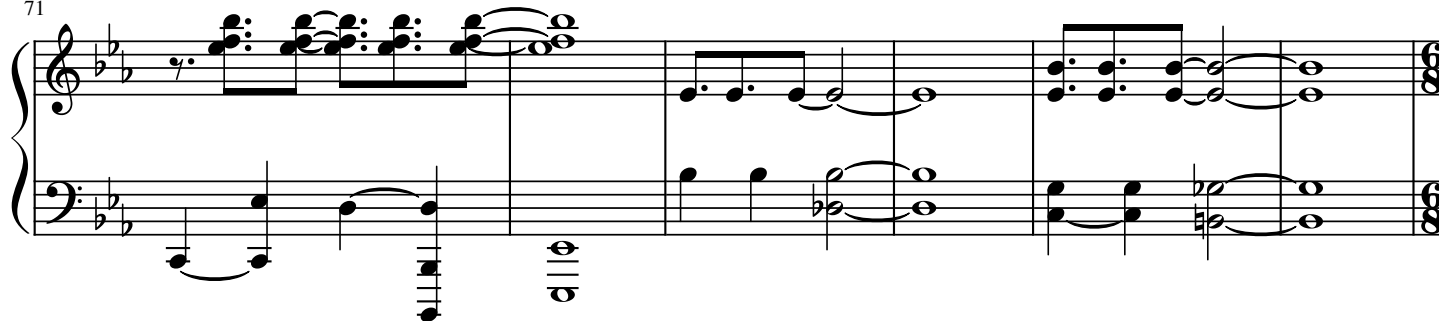
63



67



71



77

